

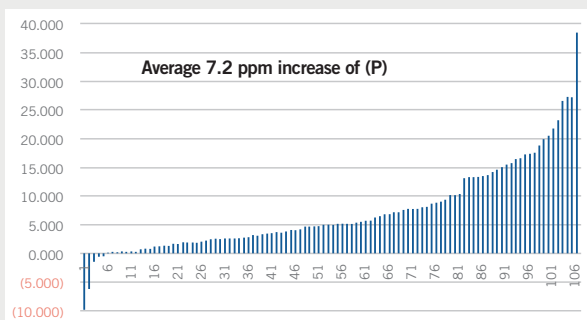


- **Makes phosphorus, zinc and other key micronutrients more available to the plant.**
- **Has three modes of action: it unlocks the nutrients in the soil, it makes the nutrients that it is applied with more available, and it is mobile in the plant for season-long activity.**
- **The most scientifically proven and only patent-pending chelating agent in the industry.**

- Levesol® is a first-of-its-kind chelate that can be added directly to starter fertilizer. Levesol makes the nutrients in your starter as well as the nutrients in your soil more available.
- Soil extraction studies demonstrate up to a 36% increase in the amount of available phosphorus when Levesol is applied with a starter fertilizer
- Enhanced nutrient availability increases early growth, overall plant health, and ultimately yield.

combination. The same study showed an even higher percentage for micronutrients like Iron, Zinc, Manganese, and Copper. No other product on the market can do this, thus Levesol is patent pending.

ICP-P EXTRACTION DIFFERENCE FROM LEVESOL - PPM



With Phosphorus being one of our most active nutrients, it can become bound with micronutrients making them unavailable to the plant. As Levesol unlocks these micronutrients from active molecules like Phosphorus, our results show we also increase the amount of available Phosphorus.



PRINCIPAL FUNCTIONING AGENTS

- Total Nitrogen (N) 2%
 - 1.5% Urea Nitrogen
 - 0.5% Ammoniacal Nitrogen
 Derived from urea and ortho-ortho EDDHA.



APPLICATION DIRECTIONS

- **For use as or with an in-furrow starter fertilizer**
Apply 64 oz per acre alone or added to an existing phosphorus-based in-furrow starter fertilizer program for corn, dry bean, potato, sorghum, soybean, sugar beet, or any other crop that could benefit from additional nutrient accessibility from starter fertilizer.

COMPATIBILITY

Levesol can be blended with most primary, secondary, or micronutrients as well as crop protection products. Add Levesol to liquid fertilizer and agitate until thoroughly mixed. In the absence of published information, check compatibility by performing a jar test with each new fertilizer type and batch prior to mixing. Mix only the amount of Levesol with starter fertilizer that can be used within a day.



PACKAGE SIZE

- 2x2.5 gal
- 250 gal
- Bulk

MINIMUM STORAGE TEMPERATURE

- Levesol will freeze at 32°F. If allowed to freeze, thaw completely prior to use.

PRODUCT WEIGHT PER GALLON

- 8.82 lb/gal



Soybeans



Dry Beans



Sugar Beets



Corn



Wheat



Sunflowers



Barley



Sorghum